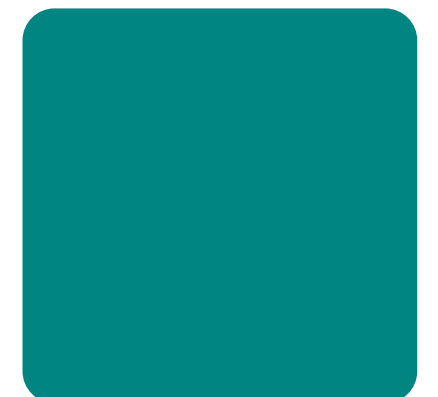
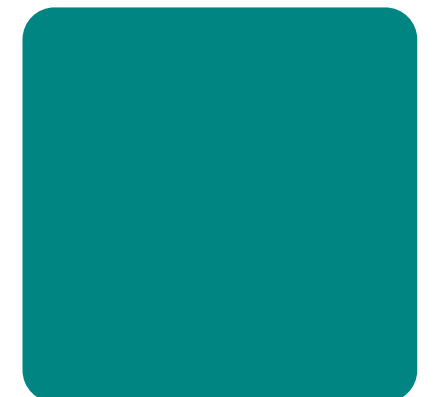




Nanjing TVX Cleaning Equipment Co., Ltd.

[www.tvxclean.com](http://www.tvxclean.com)

[market@tvxclean.com](mailto:market@tvxclean.com)



\*The image shown here is indicative only. If there is inconsistency

\*Between the image and the actual product, the actual product shall govern

# Company Profile

Founded in 2012 and headquartered in Nanjing, Jiangsu Province, Nanjing TVX Cleaning Equipment Co., Ltd. has its branches and offices in Beijing, Shanghai, Boston USA, etc. Among the 200 employees, the technical R&D personnel takes up more than 30%. The company has been certified by ISO9001, ISO14001 and ISO45001 system certifications. Its products are approved with CE, ETL and UKCA certifications.

As a leading provider of smart cleaning solutions in China, the company boasts with years of accumulated capacities in product R&D, industrial design and manufacturing, which provides systematic products and services for the cleaning industry. Currently, the existing products cover 6 series of more than 50 different models of professional cleaning equipment such as floor scrubbers, sweepers, floor polishers, vacuum cleaners, robot scrubber dryers and commercial cleaning tools.

Our products are well exported to overseas markets such as North America, Europe, South America, the Middle East, East Asia, Australia, Southeast Asia etc. And it has also established a well-developed sales and service network in domestic market. TVX aims to providing innovative products supported with science & technology and customers oriented best services.



## T15E Walk-behind Scrubber Dryer

T15E is a compact walk-behind floor scrubber with cable, designed for quick and flexible cleaning of narrow areas. With its compact design and adjustable handle, it can be shipped easily and good for cleaning the area of 20 to 200m² such as office, store, school, gym and restaurant.

### Technical Specification

CLEANING WIDTH (MM)	350	SOLUTION TANK (L)	10	CABLE LENGTH (M)	15
MACHINE DIMENSION (MM)	640*460*1100	RECOVERY TANK (L)	15	NUMBER OF BRUSH	1
WORKING EFFICIENCY (M²/H)	1597	BRUSH RPM (RPM)	130	NET WEIGHT (KG)	40



## T16B and T16B Deluxe Walk-behind Scrubber Dryer

T16B is compact walk behind floor scrubber but more productive to clean those hard-to-reach narrow spaces, with powerful battery support, it can work up to 2 hours. With unparalleled ease and efficiency, it's ideal for your offices, stores, and gyms.

### Technical Specification

CLEANING WIDTH (MM)	350	SOLUTION TANK (L)	12	SQUEEGEE WIDTH (MM)	450
MACHINE DIMENSION (MM)	715*480*1155	RECOVERY TANK (L)	16	NUMBER OF BRUSH	1
WORKING EFFICIENCY (M²/H)	1597	BRUSH RPM (RPM)	120	NET WEIGHT (KG)	45



## T35/43E Walk-behind Scrubber Dryer

T35/43E is a compact walk-behind floor scrubber with cable, designed for quick and flexible cleaning of small areas. With a 16" brush disc, 35L solution tank and recovery tank, it can clean the area of 200 to 500m² such as hotels, office, store, school, gym and restaurant.

### Technical Specification

CLEANING WIDTH (MM)	430	SOLUTION TANK (L)	35	CABLE LENGTH (M)	15
MACHINE DIMENSION (MM)	1075*810*1070	RECOVERY TANK (L)	40	NUMBER OF BRUSH	1
WORKING EFFICIENCY (M²/H)	1845	BRUSH RPM (RPM)	140	NET WEIGHT (KG)	64



## T35/43B Walk-behind Scrubber Dryer

T35/43B is a compact walk-behind floor scrubber with battery power, designed for quick and flexible cleaning of small areas. With a 16" brush disc, 35L solution tank and recovery tank, it can clean the area of 200 to 500m² such as hotels, office, store, school, gym and restaurant.

### Technical Specification

CLEANING WIDTH (MM)	430	SOLUTION TANK (L)	35	SQUEEGEE WIDTH (MM)	780
MACHINE DIMENSION (MM)	1075*810*1070	RECOVERY TANK (L)	40	NUMBER OF BRUSH	1
WORKING EFFICIENCY (M²/H)	1845	BRUSH RPM (RPM)	150	NET WEIGHT (KG)	64



## T35/50B and T35/50B Deluxe Walk-behind Scrubber Dryer

T35/50B and the T35/50B Deluxe Version are the compact and user-friendly walk-behind floor scrubbers . With optional 19" brush disc and eco cost, it's very productive to clean floors with less time in narrow space. Besides, its ergonomic handle and safer handle switch (T35/50B Deluxe Version) make it stand out for cleaning your supermarkets, offices, stores, and gyms.

### Technical Specification

CLEANING WIDTH (MM)	510	SOLUTION TANK (L)	35	SQUEEGEE WIDTH (MM)	780
MACHINE DIMENSION (MM)	1190*570*1100	RECOVERY TANK (L)	40	NUMBER OF BRUSH	1
WORKING EFFICIENCY (M²/H)	1845	BRUSH RPM (RPM)	150	NET WEIGHT (KG)	65



## T45/50E Walk-behind Scrubber Dryer

T45/50E is a small walk-behind floor scrubber with cable. As one of our most popular models for small and medium area cleaning, the eco cost but productive cleaning efficiency make it stand out for cleaning areas within 900m² such as supermarkets, offices, stores, workshops and gyms.

### Technical Specification

CLEANING WIDTH (MM)	510	SOLUTION TANK (L)	45	CABLE LENGTH (M)	15
MACHINE DIMENSION (MM)	1166*810*990	RECOVERY TANK (L)	55	NUMBER OF BRUSH	1
WORKING EFFICIENCY (M²/H)	2050	BRUSH RPM (RPM)	180	NET WEIGHT (KG)	80



## T45/50B Walk-behind Scrubber Dryer

T45/50B is a small walk-behind floor scrubber with battery power. As one of our most popular models for small and medium area cleaning, the eco cost, excellent convenient operation and productive cleaning efficiency make it stand out for cleaning areas within 900m² such as supermarkets, offices, stores, workshops and gyms.

### Technical Specification

CLEANING WIDTH (MM)	510	SOLUTION TANK (L)	45	SQUEEGEE WIDTH (MM)	780
MACHINE DIMENSION (MM)	1166*810*990	RECOVERY TANK (L)	55	NUMBER OF BRUSH	1
WORKING EFFICIENCY (M²/H)	2050	BRUSH RPM (RPM)	180	NET WEIGHT (KG)	82



## T55/50B Walk-behind Scrubber Dryer

T55/50B is a medium-sized walk-behind floor scrubber, which is suitable for cleaning warehouse, factory, hospital, metro station, school and so on. With bigger 55L solution tank and soft start technology, it offers superior cleaning for 1,000 to 2,000m².

### Technical Specification

CLEANING WIDTH (MM)	510	SOLUTION TANK (L)	55	SQUEEGEE WIDTH (MM)	780
MACHINE DIMENSION (MM)	1275*810*1025	RECOVERY TANK (L)	65	NUMBER OF BRUSH	1
WORKING EFFICIENCY (M²/H)	2050	BRUSH RPM (RPM)	180	NET WEIGHT (KG)	91





### T55/50BT Walk-behind Scrubber Dryer

T55/50BT is a medium-sized walk-behind floor scrubber equipped with a traction motor, which makes the operator can easily move forward the machine for daily cleaning. With bigger 55L solution tank and soft start technology, it offers superior cleaning for 1,000 to 2,000m².

#### Technical Specification

CLEANING WIDTH (MM)	510	SOLUTION TANK (L)	55	SQUEEGEE WIDTH (MM)	780
MACHINE DIMENSION (MM)	1275*810*1025	RECOVERY TANK (L)	65	NUMBER OF BRUSH	1
WORKING EFFICIENCY (M²/H)	2250	BRUSH RPM (RPM)	180	NET WEIGHT (KG)	93



### T55Pro Walk-behind Scrubber Dryer

T55Pro is a medium-sized walk-behind floor scrubber equipped with a traction motor and LCD screen, which can enhance the operator convenient experience for daily cleaning. With bigger 55L solution tank and soft start technology, it offers superior cleaning for 1,000 to 2,000m².

#### Technical Specification

CLEANING WIDTH (MM)	510	SOLUTION TANK (L)	55	SQUEEGEE WIDTH (MM)	780
MACHINE DIMENSION (MM)	1317*870*1052	RECOVERY TANK (L)	65	NUMBER OF BRUSH	1
WORKING EFFICIENCY (M²/H)	2550	BRUSH RPM (RPM)	180	NET WEIGHT (KG)	106



### T70/65BT Walk-behind Scrubber Dryer

T70/65BT is a big walk-behind floor scrubber equipped with a traction motor and and two 13" brush discs. With bigger 70L solution tank and 80L recovery tank, it offers superior cleaning for 1,500 to 2,000m².

#### Technical Specification

CLEANING WIDTH (MM)	690	SOLUTION TANK (L)	70	SQUEEGEE WIDTH (MM)	860
MACHINE DIMENSION (MM)	1327*870*1052	RECOVERY TANK (L)	80	NUMBER OF BRUSH	2
WORKING EFFICIENCY (M²/H)	3100	BRUSH RPM (RPM)	180	NET WEIGHT (KG)	120



### T90/55R Ride-on Scrubber Dryer

T90/55R is a small but flexible ride-on floor scrubber with single brush disc. The compact design, high flexibility and larger water tank make it outstanding for cleaning big areas like warehouse, factory, logistic center, supermarket and shopping mall.

#### Technical Specification

CLEANING WIDTH (MM)	560	SOLUTION TANK (L)	90	SQUEEGEE WIDTH (MM)	780
MACHINE DIMENSION (MM)	1429*810*1064	RECOVERY TANK (L)	100	NUMBER OF BRUSH	1
WORKING EFFICIENCY (M²/H)	2800	BRUSH RPM (RPM)	180	NET WEIGHT (KG)	113



### T90/70R Ride-on Scrubber Dryer

T90/70R is a small but flexible ride-on floor scrubber with dual brush discs. The compact design, high flexibility and larger water tank make it outstanding for cleaning big areas like warehouse, factory, logistic center, supermarket and shopping mall.

#### Technical Specification

CLEANING WIDTH (MM)	700	SOLUTION TANK (L)	90	SQUEEGEE WIDTH (MM)	780
MACHINE DIMENSION (MM)	1471*840*1185	RECOVERY TANK (L)	100	NUMBER OF BRUSH	2
WORKING EFFICIENCY (M²/H)	3500	BRUSH RPM (RPM)	180	NET WEIGHT (KG)	156



### T130 Ride-on Scrubber Dryer

T130 Basic is a bigger ride-on floor scrubber with dual brush discs. With more safety and user-friendly designs and longer durability, it's excellent for cleaning big areas like warehouse, factory, logistic center, supermarket and shopping mall.

#### Technical Specification

CLEANING WIDTH (MM)	860	SOLUTION TANK (L)	120	SQUEEGEE WIDTH (MM)	1100
MACHINE DIMENSION (MM)	1530*1130*1240	RECOVERY TANK (L)	130	NUMBER OF BRUSH	2
WORKING EFFICIENCY (M²/H)	5590	BRUSH RPM (RPM)	180	NET WEIGHT (KG)	225



### T130C Ride-on Scrubber Dryer, With Water Recycle System

T130C is a bigger ride-on floor scrubber with water recycle system. With three-level filtration system and longer durability, it's excellent to save the water when cleaning big areas like warehouse, factory, logistic center, supermarket and shopping mall.

#### Technical Specification

CLEANING WIDTH (MM)	860	SOLUTION TANK (L)	120	SQUEEGEE WIDTH (MM)	1100
MACHINE DIMENSION (MM)	1530*1130*1240	RECOVERY TANK (L)	130	NUMBER OF BRUSH	2
WORKING EFFICIENCY (M²/H)	5590	BRUSH RPM (RPM)	180	NET WEIGHT (KG)	225



### T150/85R - Manual Ride-on Scrubber Dryer

T150/85R-Manual is a powerful ride-on floor scrubber with manual brush and squeegee lifting design. It offers high stability and durability, suitable for daily cleaning and deep cleaning in the areas of 3,000 to 6,000m², such as shopping malls, airports, large logistics centers and warehouses.

#### Technical Specification

CLEANING WIDTH (MM)	860	SOLUTION TANK (L)	150	SQUEEGEE WIDTH (MM)	1200
MACHINE DIMENSION (MM)	1651*1200*1258	RECOVERY TANK (L)	170	NUMBER OF BRUSH	2
WORKING EFFICIENCY (M²/H)	5590	BRUSH DIAMETER (IN)	16"	NET WEIGHT (KG)	234



### T150/85R - Auto Ride-on Scrubber Dryer

T150/85R-Auto is a powerful ride-on floor scrubber with automatic brush and squeegee lifting design. It offers high stability and durability, suitable for daily cleaning and deep cleaning in the areas of 3,000 to 6,000m², such as shopping malls, airports, large logistics centers and warehouses.

#### Technical Specification

CLEANING WIDTH (MM)	860	SOLUTION TANK (L)	150	SQUEEGEE WIDTH (MM)	1200
MACHINE DIMENSION (MM)	1651*1200*1258	RECOVERY TANK (L)	170	NUMBER OF BRUSH	2
WORKING EFFICIENCY (M²/H)	5590	BRUSH DIAMETER (IN)	16"	NET WEIGHT (KG)	234



### T150/100R - Manual Ride-on Scrubber Dryer

T150/100R-Manual is a powerful ride-on floor scrubber with manual brush and squeegee lifting design. It offers high stability and durability, suitable for daily cleaning and deep cleaning in the areas of 3,000 to 6,000m², such as shopping malls, airports, large logistics centers and warehouses.

#### Technical Specification

CLEANING WIDTH (MM)	1050	SOLUTION TANK (L)	150	SQUEEGEE WIDTH (MM)	1200
MACHINE DIMENSION (MM)	1651*1200*1258	RECOVERY TANK (L)	170	NUMBER OF BRUSH	2
WORKING EFFICIENCY (M²/H)	6830	BRUSH DIAMETER (IN)	19"	NET WEIGHT (KG)	242



### T150/100R - AUTO Ride-on Scrubber Dryer

T150/100R-Auto is a powerful ride-on floor scrubber with automatic brush and squeegee lifting design. It offers high stability and durability, suitable for daily cleaning and deep cleaning in the areas of 3,000 to 6,000m<sup>2</sup>, such as shopping malls, airports, large logistics centers and warehouses.

#### Technical Specification

CLEANING WIDTH (MM)	1050	SOLUTION TANK (L)	150	SQUEEGEE WIDTH (MM)	1200
MACHINE DIMENSION (MM)	1651*1200*1258	RECOVERY TANK (L)	170	NUMBER OF BRUSH	2
WORKING EFFICIENCY (M <sup>2</sup> /H)	6830	BRUSH DIAMETER (IN)	19"	NET WEIGHT (KG)	242



### T150Pro Ride-on Scrubber Dryer

T150Pro is a powerful ride-on floor scrubber with LCD screen. It offers high stability and durability, and the brush pressure is adjustable. With upgraded safety and user-freindly design, it's suitable for daily cleaning and deep cleaningon shopping malls, airports, large logistics centers and warehouses.

#### Technical Specification

CLEANING WIDTH (MM)	1050	SOLUTION TANK (L)	150	SQUEEGEE WIDTH (MM)	1200
MACHINE DIMENSION (MM)	1710*1200*1308	RECOVERY TANK (L)	170	NUMBER OF BRUSH	2
WORKING EFFICIENCY (M <sup>2</sup> /H)	6830	BRUSH DIAMETER (IN)	19"	NET WEIGHT (KG)	295



### T150Pro C Ride-on Scrubber Dryer

T150Pro C is a powerful ride-on floor scrubber with cylindrical brushes. The roller brushes can save your time on presweeping small debris. With upgraded safety and user-freindly design, it's suitable for daily cleaning and deep cleaningon shopping malls, airports, large logistics centers and warehouses.

#### Technical Specification

CLEANING WIDTH (MM)	800	SOLUTION TANK (L)	150	SQUEEGEE WIDTH (MM)	1200
MACHINE DIMENSION (MM)	1710*1200*1308	RECOVERY TANK (L)	170	NUMBER OF BRUSH	2
WORKING EFFICIENCY (M <sup>2</sup> /H)	5200	BRUSH DIAMETER (MM)	800	NET WEIGHT (KG)	274



### Aries 860 LdB Ride-on Scrubber Dryer

Aries860 is designed for commercial and industrial scenarios, with features such as efficient cleaning, intelligent operation, environmental protection and energy saving. Innovative functions such as water-air separation, ultra quiet module, hypochlorous acid disinfection, etc., adapt to a variety of complex environments ensuring safety and hygiene.

#### Technical Specification

CLEANING WIDTH (MM)	860	SOLUTION TANK (L)	115	SQUEEGEE WIDTH (MM)	1100
MACHINE DIMENSION (MM)	1523*1130*1420	RECOVERY TANK (L)	130	NUMBER OF BRUSH	2
WORKING EFFICIENCY (M <sup>2</sup> /H)	5590	BRUSH RPM (RPM)	180	NET WEIGHT (KG)	234



### Aries 860 Dosing Ride-on Scrubber Dryer

Aries860 is designed for commercial and industrial scenarios, with features such as efficient cleaning, intelligent operation, environmental protection and energy saving. Innovative functions such as water-air separation, ultra quiet module, hypochlorous acid disinfection, etc., adapt to a variety of complex environments ensuring safety and hygiene.

#### Technical Specification

CLEANING WIDTH (MM)	860	SOLUTION TANK (L)	115	SQUEEGEE WIDTH (MM)	1100
MACHINE DIMENSION (MM)	1523*1130*1420	RECOVERY TANK (L)	130	NUMBER OF BRUSH	2
WORKING EFFICIENCY (M <sup>2</sup> /H)	5590	BRUSH RPM (RPM)	180	NET WEIGHT (KG)	234



### Aries 860 Hypochlorous Acid Version Ride-on Scrubber Dryer

Aries860 is designed for commercial and industrial scenarios, with features such as efficient cleaning, intelligent operation, environmental protection and energy saving. Innovative functions such as water-air separation, ultra quiet module, hypochlorous acid disinfection, etc., adapt to a variety of complex environments ensuring safety and hygiene.

#### Technical Specification

CLEANING WIDTH (MM)	860	SOLUTION TANK (L)	115	SQUEEGEE WIDTH (MM)	1100
MACHINE DIMENSION (MM)	1523*1130*1420	RECOVERY TANK (L)	130	NUMBER OF BRUSH	2
WORKING EFFICIENCY (M <sup>2</sup> /H)	5590	BRUSH RPM (RPM)	180	NET WEIGHT (KG)	234



### TS1300Pro Ride-on Sweeper

TS1300Pro is a powerful ride-on floor sweeper machine, designed for medium-sized large-area indoor and outdoor cleaning tasks. With a dust collection and filtration system, it's suitable for daily sweeping in areas such as airport stations, parking stations, large-scale logistics warehouses, production workshops, etc.

#### Technical Specification

CLEANING WIDTH (MM)	1330	SOLUTION TANK (L)	30	FILTER SURFACE (M <sup>2</sup> )	6
MACHINE DIMENSION (MM)	2716*1912*2350	DUSTBIN (L)	100	FORWARD SPEED (KM/H)	0-6.5
WORKING EFFICIENCY (M <sup>2</sup> /H)	7315	MAX. GRADEABILITY (%)	18	NET WEIGHT (KG)	283



### TS1900 Ride-on Sweeper

TS1900 is a powerful and large open-top ride-on floor sweeper machine, designed for large-area indoor and outdoor industrial sweeping tasks. With manual trash can, it's suitable for daily sweeping in areas such as airport stations, parking stations, large-scale logistics warehouses, production workshops, etc.

#### Technical Specification

CLEANING WIDTH (MM)	1330	SOLUTION TANK (L)	230	CAB	OPEN-TOP
MACHINE DIMENSION (MM)	2347*1912*1700	DUSTBIN (L)	160	DUSTBIN	MANUAL GARBAGE DUMP
WORKING EFFICIENCY (M <sup>2</sup> /H)	19000	MAX. GRADEABILITY (%)	25	NET WEIGHT (KG)	910



### TS1900S Ride-on Sweeper

TS1900S is a powerful and large open-top ride-on floor sweeper machine, designed for large-area indoor and outdoor industrial sweeping tasks. With automatic trash can, it's suitable for daily sweeping in areas such as airport stations, parking stations, large-scale logistics warehouses, production workshops, etc.

#### Technical Specification

CLEANING WIDTH (MM)	1900	SOLUTION TANK (L)	230	CAB	OPEN-TOP
MACHINE DIMENSION (MM)	2347*1912*1700	DUSTBIN (L)	160	DUSTBIN	AUTOMATIC GARBAGE DUMP
WORKING EFFICIENCY (M <sup>2</sup> /H)	19000	MAX. GRADEABILITY (%)	25	NET WEIGHT (KG)	900



### TS1900H Ride-on Sweeper

TS1900H is a powerful and large semi-enclosed ride-on floor sweeper machine, designed for large-area indoor and outdoor industrial sweeping tasks. With manual trash can, it's suitable for daily sweeping in areas such as airport stations, parking stations, large-scale logistics warehouses, production workshops, etc.

#### Technical Specification

CLEANING WIDTH (MM)	1900	SOLUTION TANK (L)	230	CAB	SEMI-ENCLOSED
MACHINE DIMENSION (MM)	2716*1912*2350	DUSTBIN (L)	160	DUSTBIN	MANUAL GARBAGE DUMP
WORKING EFFICIENCY (M <sup>2</sup> /H)	19000	MAX. GRADEABILITY (%)	21	NET WEIGHT (KG)	1000





### TS1900HS Ride-on Sweeper

TS1900HS is a powerful and large semi-enclosed ride-on floor sweeper machine, designed for large-area indoor and outdoor industrial sweeping tasks. With automatic trash can, it's suitable for daily sweeping in areas such as airport stations, parking stations, large-scale logistics warehouses, production workshops, etc.

#### Technical Specification

CLEANING WIDTH (MM)	1900	SOLUTION TANK (L)	230	CAB	SEMI-ENCLOSED
MACHINE DIMENSION (MM)	2716*1912*2350	DUSTBIN (L)	160	DUSTBIN	AUTOMATIC GARBAGE DUMP
WORKING EFFICIENCY (M²/H)	19000	MAX. GRADEABILITY (%)	21	NET WEIGHT (KG)	1050



### TS1900AS Ride-on Sweeper

TS1900AS is a powerful and large full-enclosed ride-on floor sweeper machine, designed for large-area indoor and outdoor industrial sweeping tasks. With automatic trash can, it's suitable for daily sweeping in areas such as airport stations, parking stations, large-scale logistics warehouses, production workshops, etc.

#### Technical Specification

CLEANING WIDTH (MM)	1900	SOLUTION TANK (L)	230	CAB	FULLY ENCLOSED
MACHINE DIMENSION (MM)	2716*1912*2350	DUSTBIN (L)	160	DUSTBIN	AUTOMATIC GARBAGE DUMP
WORKING EFFICIENCY (M²/H)	19000	MAX. GRADEABILITY (%)	21	NET WEIGHT (KG)	1120



### TS1900AC Ride-on Sweeper

TS1900AC is a powerful and large full-enclosed ride-on floor sweeper machine, designed for large-area indoor and outdoor industrial sweeping tasks. With automatic trash can and air conditioner, it's suitable for daily sweeping in areas such as airport stations, parking stations, large-scale logistics warehouses, production workshops, etc.

#### Technical Specification

CLEANING WIDTH (MM)	1900	SOLUTION TANK (L)	230	CAB	FULLY ENCLOSED
MACHINE DIMENSION (MM)	2716*1912*2350	DUSTBIN (L)	160	DUSTBIN	AUTOMATIC GARBAGE DUMP
WORKING EFFICIENCY (M²/H)	19000	MAX. GRADEABILITY (%)	21	NET WEIGHT (KG)	1150

### Gemini 35 Cleaning Robot

Gemini 35 is engineered as a robust cleaning robot tailored to address the rigorous demands of industrial cleaning tasks. Outfitted with a capacious 45-liter dust tank, multi-sensor fusion navigation, and advanced 3D environment awareness technology, it possesses the versatility to effectively operate across various industrial sectors including warehousing logistics, chemical and nuclear facilities, food and beverage factories, and automated manufacturing environments.

#### Technical Specification

CLEANING WIDTH (MM)	900	SIDE BRUSH WIDTH (MM)	990	ROLLER BRUSH MOTOR (V/W)	36/120
MACHINE DIMENSION (MM)	1005*935*500	SIDE BRUSH MOTOR (V/W)	2*36/100	VACUUM MOTOR (V/W)	2*36/100
WORKING EFFICIENCY (M²/H)	2100	DUST TANK (L)	45	FORWARD SPEED (KM/H)	0-3.6

### T-Card Mobile Cleaning Workstation

The mobile cleaning workstation is equipped with a water bag with 20L large capacity; integrated with the function such as storage, cleaning, polishing and disinfection and sterilization, it is widely used in areas such as hotels, residential communities, shopping centers, hospitals and so on.

#### Technical Specification

VOLTAGE (V)	110/220	NET VOLUME (L)	50
VOLUME OF WATER BAG (L)	20	WORKING DIMENSION (MM)	1500*600*1050
VOLUME OF SELF-CLEANING BARREL (L)	2.7	PACKAGE SIZE (MM)	960*780*650



### TF-1517 Floor Machine

TF-1517 Floor Machine, professional commercial cleaning equipment, suitable for basic maintenance, renovation, waxing, polishing and carpet cleaning of floors such as marble, granite, ceramic tile and so on, and the areas include hotels, residential communities, hospitals, office buildings, shopping malls, supermarkets, etc.

#### Technical Specification

VOLTAGE (V)	110/220	NOISE (DB)	53	CABLE LENGTH (M)	15
MACHINE DIMENSION (MM)	1110*540*460	BRUSH DIAMETER (IN)	17"	HANDLE	ADJUSTABLE
POWER (W)	1100	ROTATING SPEED (RPM)	174/144	NET WEIGHT (KG)	45



### TB-1520 Burnisher

TB-1520 Burnisher is a professional commercial cleaning equipment, which is suitable for the crystal surface maintenance, floor waxing, waxing and polishing, etc. for various stone floors.

#### Technical Specification

VOLTAGE (V)	110/220	NOISE (DB)	65	CABLE LENGTH (M)	15
MACHINE DIMENSION (MM)	1110*640*450	BRUSH DIAMETER (IN)	19"	HANDLE	ADJUSTABLE
POWER (W)	1100	ROTATING SPEED (RPM)	1200/1000	NET WEIGHT (KG)	47



### TF-1517R Orbital Machine

TF-1517R Orbital Machine is a professional commercial cleaning equipment. Equipped with an eccentric damping system, which allows the brush disc to fully contact the ground. Convenient to operate and with higher cleaning efficiency, it is suitable for medium or heavily polluted ground cleaning.

#### Technical Specification

VOLTAGE (V)	110/220	NOISE (DB)	58	CABLE LENGTH (M)	15
MACHINE DIMENSION (MM)	1110*540*460	BRUSH DIAMETER (IN)	17"	HANDLE	ADJUSTABLE
POWER (W)	1100	ROTATING SPEED (RPM)	1740/1440	NET WEIGHT (KG)	51



### TF-1517S Square Orbital Machine

TF-1517S Square Orbital Machine is a professional commercial cleaning equipment. Equipped with an eccentric damping system, which allows the scouring pad to fully contact the ground. Convenient to operate and with higher cleaning efficiency, it is suitable for medium or heavily polluted ground cleaning, especially for corner cleaning.

#### Technical Specification

VOLTAGE (V)	110/220	NOISE (DB)	65	CABLE LENGTH (M)	15
MACHINE DIMENSION (MM)	1200*650*520	BRUSH DIAMETER (IN)	14"*20"	HANDLE	ADJUSTABLE
POWER (W)	1100	ROTATING SPEED (RPM)	1740/1440	NET WEIGHT (KG)	60





### V20EW Water Filtration Wet and Dry Vacuum

Water filtration wet and dry vacuum supports dry and wet uses, innovative water filtration design, quiet motor and strong suction, 20L capacity, suitable for areas such as families, hotels, car washing shops, offices, warehouses, shopping malls and so on.

#### Technical Specification

VOLTAGE (V)	110/220	NOISE (DB)	76	HOSE DIAMETER (MM)	38
PACKAGE SIZE (MM)	370*370*460	VOLUME (L)	20	AIR FLOW (L/S)	30
POWER (W)	1200	VACUUM PRESSURE (KPA)	15/17	NET WEIGHT (KG)	5.7



### V70E Front-mounted Wet and Dry Vacuum

The wet and dry vacuum supports dry and wet uses, professional water valve design with protective circuit; the rotatable bucket body makes it easy to dump garbage, widely used in areas such as shopping malls, warehouses, workshops, car washing shops and so on.

#### Technical Specification

SQUEEGEE WIDTH (MM)	600	NOISE (DB)	76	CABLE LENGTH (M)	10
VOLTAGE (V)	220	RECOVERY TANK (L)	70	AIR FLOW (L/S)	108
POWER (W)	2000	VACUUM PRESSURE (KPA)	20	NET WEIGHT (KG)	25



### Powlink Series Chargers

Powlink series chargers are industrial-grade chargers with outstanding performance on flexibility, reliability, efficiency and after-service.

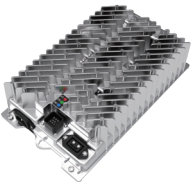
#### Technical Specification

MODELS	PLK 350	POWER	320~350 W	NOMINAL VOLTAGE	24VDC
MAXIMUM CURRENT	15A	START-UP VOLTAGE	2VDC	IP GRADE	IP66, NEMA4
DIMENSION	198*148*59MM	WEIGHT	2.12KG	COOLING	NATURAL COOLING



#### Technical Specification

MODELS	PLK 500	POWER	380~425 W	NOMINAL VOLTAGE	24VDC
MAXIMUM CURRENT	20A	START-UP VOLTAGE	2VDC	IP GRADE	IP66, NEMA4
DIMENSION	249*142*79.5MM	WEIGHT	2.62KG	COOLING	NATURAL COOLING



#### Technical Specification

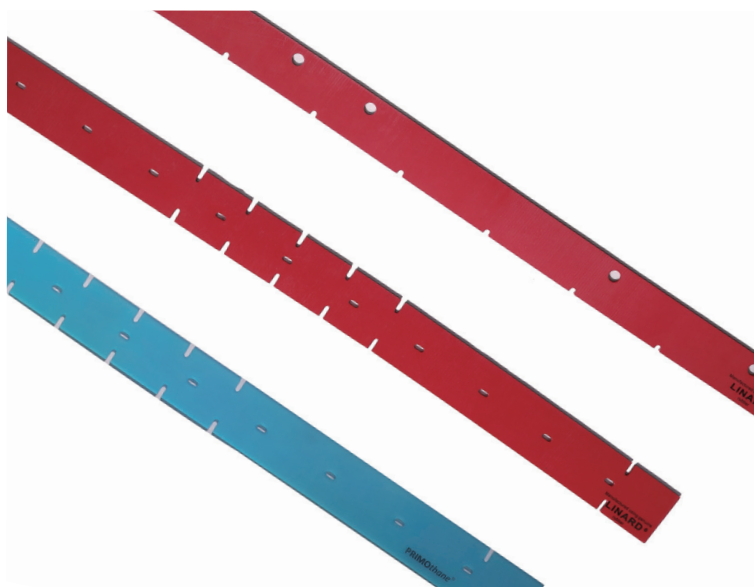
MODELS	PLK 900 SERIES	POWER	900 W	NOMINAL VOLTAGE	36VDC/48VDC
MAXIMUM CURRENT	25A/20A	START-UP VOLTAGE	2VDC	IP GRADE	IP66, NEMA4
DIMENSION	300*179*80MM	WEIGHT	3.9KG	COOLING	NATURAL COOLING

### Brush/ Pad Holder



DESCRIPTION	PP DIAMETER (MM)	SIZE (INCH)
BRUSH	0.6	13
BRUSH	0.6	16
BRUSH	0.6	19
BRUSH	0.6	21
BRUSH	0.28	13
BRUSH	0.28	16
BRUSH	0.28	19
BRUSH	0.28	21
SIDE BRUSH	500	/
ROLLER BRUSH	430	/
WATER-LOCK BRUSH	/	16
PAD HOLDER	/	13
PAD HOLDER	/	16
PAD HOLDER	/	19
PAD HOLDER	/	21
ROLLING BRUSH 694	/	/
SIDE BRUSH	/	/

### Rubber strip



DESCRIPTION	SIZE (MM)
FRONT SQUEEGEE BLADE RUBBER	3*50*503
FRONT SQUEEGEE BLADE RUBBER	3*50*785
FRONT SQUEEGEE BLADE RUBBER	3*50*785
FRONT SQUEEGEE BLADE RUBBER	3*45*967
FRONT SQUEEGEE BLADE RUBBER	3*50*1217
FRONT SQUEEGEE BLADE RUBBER	3*54*1165
FRONT SQUEEGEE BLADE OIL PROOF	3*50*785
FRONT SQUEEGEE BLADE OIL PROOF	3*50*785
FRONT SQUEEGEE BLADE OIL PROOF	3*45*967
FRONT SQUEEGEE BLADE OIL PROOF	3*50*1217
REAR SQUEEGEE BLADE RUBBER	3*50*545
REAR SQUEEGEE BLADE RUBBER	4.5*53*835
REAR SQUEEGEEBLADE RUBBER	4.5*53*835
REAR SQUEEGEE BLADE RUBBER	4*45*980
REAR SQUEEGEE BLADE RUBBER	5*54*1290
REAR SQUEEGEE BLADE RUBBER	5*54*1210
REAR SQUEEGEE BLADE OIL PROOF	4*53*835
REAR SQUEEGEE BLADE OIL PROOF	4.5*53*835
REAR SQUEEGEE BLADE OIL PROOF	4*45*980
REAR SQUEEGEE BLADE OIL PROOF	5*50*1290